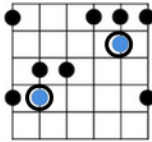


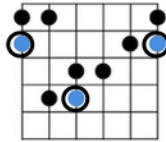
Four Must-Know Arpeggio Forms

Find this lesson and more at www.highcountryguitar.com/lessons

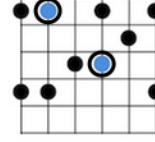
C shape
maj7 arp.



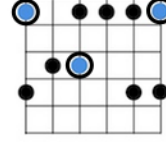
E shape
maj7 arp.



Am shape
minor 7 arp.



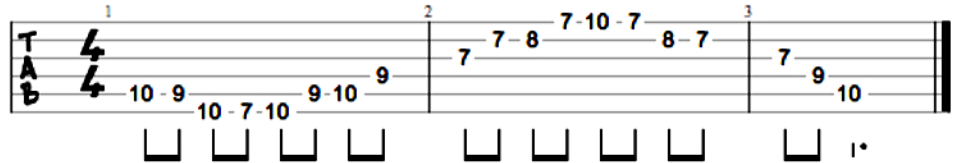
Em shape
minor 7 arp.



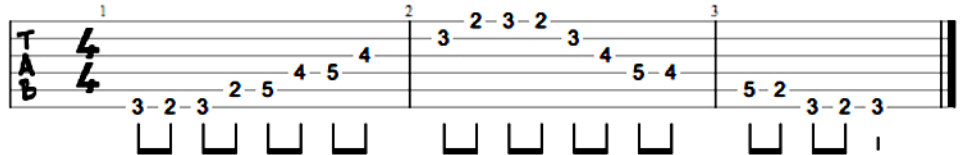
(Root notes are circled)

Note: All of the arpeggios below are written so that they start and end on root notes. This makes it a bit easier to hear what they sound like. In practice, you don't have to play them this way. Experiment with different patterns within these arpeggios, find useful clusters of notes within them, and memorize the patterns so that you can freely play them elsewhere on the fretboard.

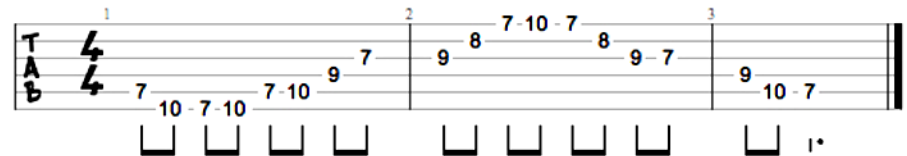
Gmaj7 arpeggio
(C shape)



Gmaj7 arpeggio
(E shape)



Em7 arpeggio
(Am shape)



Bm7 arpeggio
(Em shape)



Some suggested uses for modal improv:

Dorian Mode

Major 7 arpeggio from a whole step below the root
Example: Gmaj7 arpeggio in A dorian

Major 7 arpeggio from relative major, 2 scale steps above the root
Example: Cmaj7 arpeggio in A dorian

Minor 7 arpeggio from a whole step above the root
Example: Bm7 arpeggio in A dorian

Minor 7 arpeggio from the 5th
Example: Em7 arpeggio in A dorian

Mixolydian Mode

Major 7 arpeggio from a whole step below the root
Example: Gmaj7 arpeggio in A mixolydian

Minor 7 arpeggio from a whole step above the root
Example: Bm7 arpeggio in A mixolydian

Minor 7 arpeggio from the 5th.
Example: Em7 arpeggio in A mixolydian